

UPCOMING SHOW

Up to 20 works on show

May 4 thru 25, 2006

Ann Long Fine Art

177 King Street

Charleston, SC 29401

(843) 577-0447

● DESTINATION CHARLESTON, SC

ELIZABETH LEARY

Clean lines, classical style draw Leary to paintings of historic architecture and still life.



▲ TWO PEARS BY CANDLE LIGHT, OIL ON CANVAS, 5 X 7"

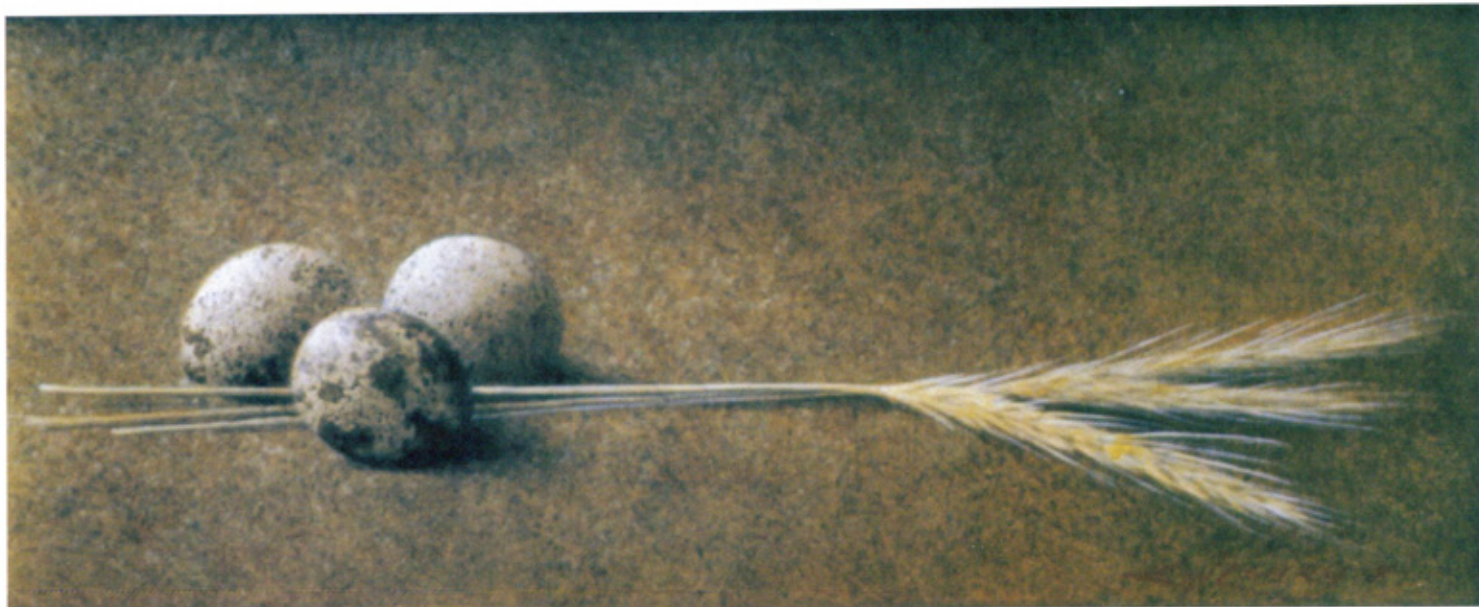
For her first show at Ann Long Fine Art, Elizabeth Leary will present a combination of her still life and architectural work, each of which is based on the premise of clean lines and geometrical forms.

"I've been painting for over 30 years and in that time have concentrated on historic architecture on the New England and Atlantic Coast," says Leary. "I studied to be an architect and the geometrical forms found in this have always interested me."

Leary also feels that what connects the two distinct genres is the way light reacts to the forms and shapes in the paintings.

"With the structures, I'm interested in the way light hits them and reflects off them," says Leary. "And this transfers itself very nicely to still life. What is important in still life is having great shapes, wonderful textures and something that has a basic visual interest. Barns have squares, rectangles, triangles and the same

▼ QUAIL EGGS AND WHEAT, OIL ON CANVAS, 4 1/2 X 10 1/2"





BUCKROAD BARN, OIL ON CANVAS, 14 X 20"

The Gallery Says . . .

“Leary’s work has added so much to our gallery—her clean, classical lines and calm palette have a spiritual nature that is very attractive to our clients.”

— Ann Long, Ann Long Fine Art

is true with eggs, boxes, balls and such.”

For these still life paintings, Leary is after unique objects that she finds intriguing.

“What I like to do is work with more of a collection of objects,” says Leary. “Rows of feathers, eggs, pears. What’s also important is the shapes between the objects, the contrast of edges, whether they or hard or disappear, there’s a great deal involved.”

While Leary favors a tight, realistic style, she also wishes to leave some interpretation up to the viewer.

“Yes, they are realistic, but there is also a bit of detachment,” says Leary. “If I paint a barn, it’s not exactly one in the

landscape it truly fits in. I like to have some mystery, to leave something up to the viewer’s eye. I see it as creating a stage set for the viewers and they add personal thoughts, moods, emotions and their own interpretations to the work.”

With a background in architecture, Leary is also after a certain logic and symmetry in her paintings.

“Mathematical clarity is important to me,” says Leary. “I’m very particular about perspective and actual drawing. You need to have accuracy in the drawing. It’s like the foundation of a building; you need to build on it or it undermines the eventual effect of a painting.” ●

For a direct link to the exhibiting gallery go to

www.americanartcollector.com

Price Range Indicator

Our at-a-glance Price Range Indicator shows what you can expect to pay for this artist’s work.

	Small	Medium	Large
2006	\$1,500	\$7,000	\$15,000